



2018 ANNUAL PROGRESS REPORT

Delawareans Working Together



STUDENT
SUCCESS
— 2 0 2 5 —

VISION
COALITION
OF DELAWARE



Collaboration is the Key

It's no surprise that collaboration—the key ingredient in so much of our state's progress this year—is the theme of the 2018 Vision Coalition Conference. So we asked each member of the Vision Coalition Leadership Team:

What is one Delaware collaboration that's helping students succeed?

LEADERSHIP TEAM

Delaware State University and Early College High School @ DSU | **Tony Allen, Ph.D.**
Provost/Executive Vice President
Delaware State University

Western Sussex Boys & Girls Club and Seaford High School | **Jeffrey T. Benson, Jr.**
President
One Direction Insurance
Benson Development Group, LLC

Every Student Succeeds Act and school and community partners | **Susan Bunting**
Secretary of Education
State of Delaware

Delaware Goes To College | **Heath Chasanov**
Superintendent
Woodbridge School District

Delaware Business Roundtable Education Committee | **Ernest J. Dianastasis**
Chief Executive Officer
The Precisionists, Inc.

TeachDE | **Elizabeth 'Liz' Farley-Ripple, Ph.D.**
Associate Professor of Education and Public Policy
School of Education
affiliate of the Institute for Public Administration
University of Delaware

Wilmington Community Advisory Council | **Dorrell Green**
Director of Innovation and Improvement
Delaware Department of Education

Local healthcare providers working with schools on mental health supports | **Paul A. Herdman**
President and Chief Executive Officer
Rodel Foundation of Delaware

Brandywine School District and the Sandy Hook Foundation | **Mark Holodick**
Superintendent
Brandywine School District

Mike Matthews
President
Delaware State Education Association
Compassionate Connections Partnership

Leslie Newman
Chief Executive Officer
Children & Families First of Delaware
Children & Families First and Community Schools in Red Clay, Christina, and Brandywine School Districts

Justina M. Sapna
Vice President for Academic Affairs
Delaware Technical Community College
Foundations of College English Course

Gary Stockbridge
President
Delmarva Power
Delaware employers and High School Pathways

Javier G. Torrijos
Chair
Delaware Hispanic Commission
Assistant Director of Construction
Delaware Department of Transportation
Governor's Advisory Council on English Learners

Margie López Waite
Head of School
Las Américas ASPIRA Academy
ASPIRA and Colonial School District



Collectively, the skills found in the North Star—a distillation of comments shared by 4,000 Delawareans—will prepare students for a lifetime of success.

Progress in the 6 Core Areas



Early Learning

Our challenge: Nearly half of Delaware children aren't entering kindergarten with the social and emotional skills needed for success, and less than 10 percent of Delaware four-year-olds are enrolled in state-sponsored pre-K.

Progress:

- Delaware Readiness Teams launched its first kindergarten registration campaign
- A \$3.8 million state investment will help grow Stars quality improvement system
- At least \$2 million was added to Delaware's Purchase of Care reimbursement rate, increasing access to quality care for low-income families
- Delaware increased its commitment to providing developmental screenings to early learners and climbed up national rankings (now 21st in the country, from dead last just a few years ago)
- The state was awarded national grants from the W.K. Kellogg Foundation and the National Governors Association that will support the early learning workforce

Personalized Learning

Our challenge: To respond to a range of student needs and experiences that is not cookie-cutter.

Progress:

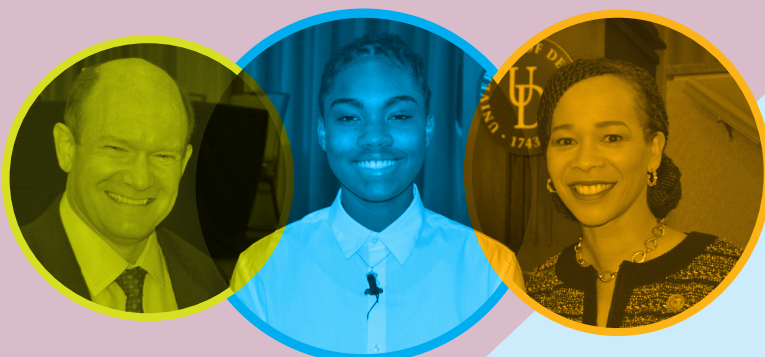
- 17 school districts and 14 charter schools implemented a new management system
- All Delaware institutions of higher education implemented transcript-based transcripts, enabling K-12 students to earn college credit
- Delaware Senate Bill 85 brings new legislation for implementing restorative justice
- Educators and LEAs collaborating on developing learning competencies

System Governance, Alignment, and Performance

Our challenge: Advancements in instruction and technology beg for system-wide changes across schools to improve family engagement and cross-school collaboration.

Progress:

- Upcoming school and district "report cards" will help increase community transparency and access, student subgroup data, and a more holistic definition of student and school success
- 9 districts in the BRINC consortium dedicated to blended learning now sharing lessons across district lines online and beginning to offer cross-district courses



Fair and Efficient

Our challenge: Delaware's 70-year-old school funding formula lacks transparency, and most importantly—equity.

Progress:

- Increased funding will provide more resources for K-3 basic special education
- Increased advocacy and legislative attention to equity
- Gov. Carney established the Advisory Council on Equity, which calls for weighted funding for English learners
- Opportunity Grants provide increased funding for students who have experienced trauma
- New federal guidelines will provide Delaware with additional funding

Personalized Learning

In a rapidly changing world, students need an educational experience that maximizes who they are as individuals.

More schools now using Schoology, the statewide online learning

Our education shared their commitment to accept mastery-based learning to further develop modern systems

New requirements for discipline reporting and

Working to develop social and emotional

Personalized Learning

Early Childhood

Efficient Learning

and Funding

Our funding system holds back innovation, flexibility,

for middle school math coaches, reading interventionists, and

to the funding system, including a lawsuit and several bills in the legislature

on English Learners to implement the English Learner Strategic Plan,

learners and more investment in certified teachers and early learning

for schools to support English learners, low-income students, and

with increased school-level financial reporting



Postsecondary Success

Our challenge: Some economists predict that by 2020, 65 percent of jobs will require education beyond a high school diploma (like a professional certification, a two-year degree, or a four-year degree). Today in Delaware, around 50 percent of young adults age 18-24 have some postsecondary education.

Progress:

- Students have more career preparation options than before—with nearly 12,000 students enrolled in 14 state model pathways that provide access to industry credentials, early college credits, and work-based learning experiences in 2018
- A new Foundations of College English course allows high school juniors and seniors to better prepare for college-level English
- Delaware Advance Scholarship Program was created so that students with disabilities can more easily access comprehensive transition and postsecondary programs

Educator Support and Development

Our challenge: Teachers and leaders are the two most important in-school factors impacting student learning. But Delaware schools that serve high percentages of low-income students see more teachers leaving the classroom after one year.

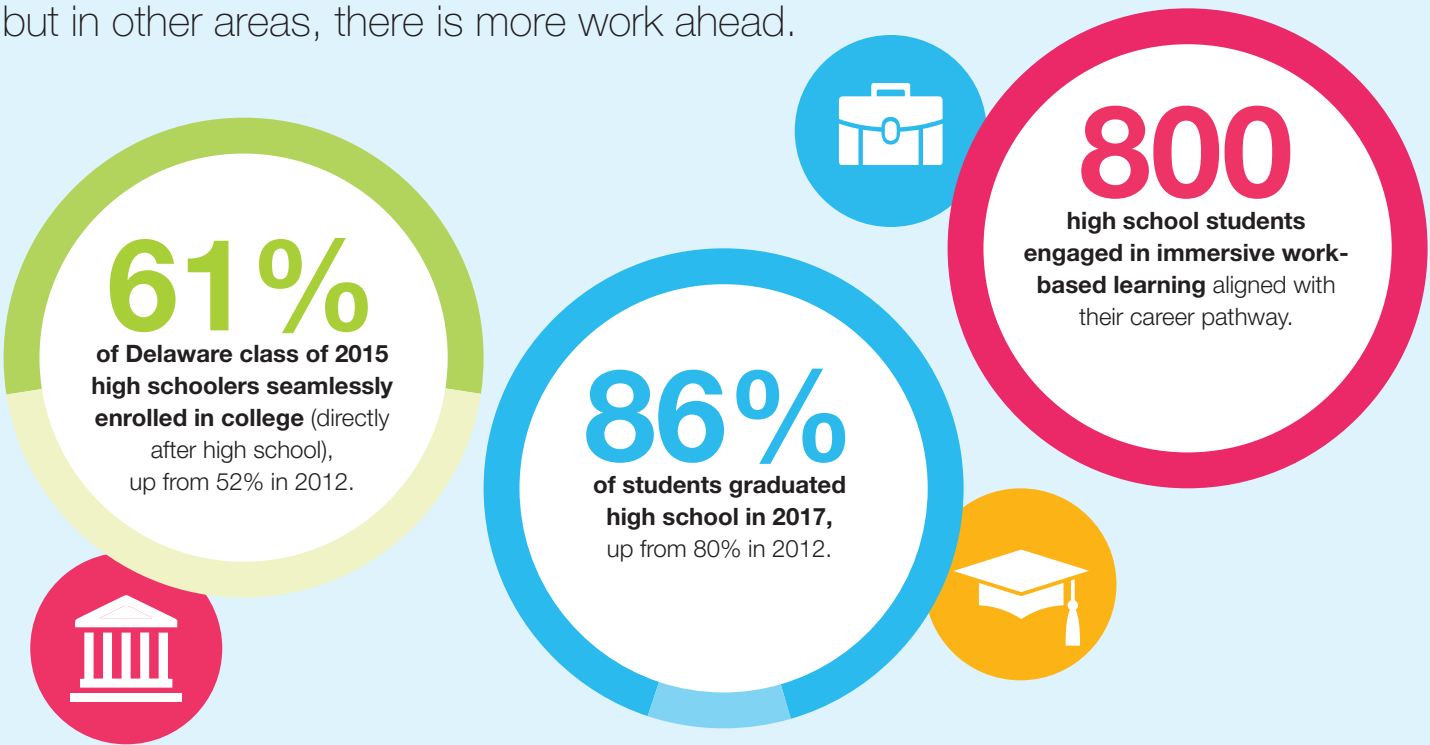
Progress:

- A \$200,000 loan forgiveness fund was established for educators to work in schools serving typically under-resourced students, including English learners, low-income students, students with disabilities, and students of color
- Alternative evaluation and coaching roles have helped support “grow your own leader” models



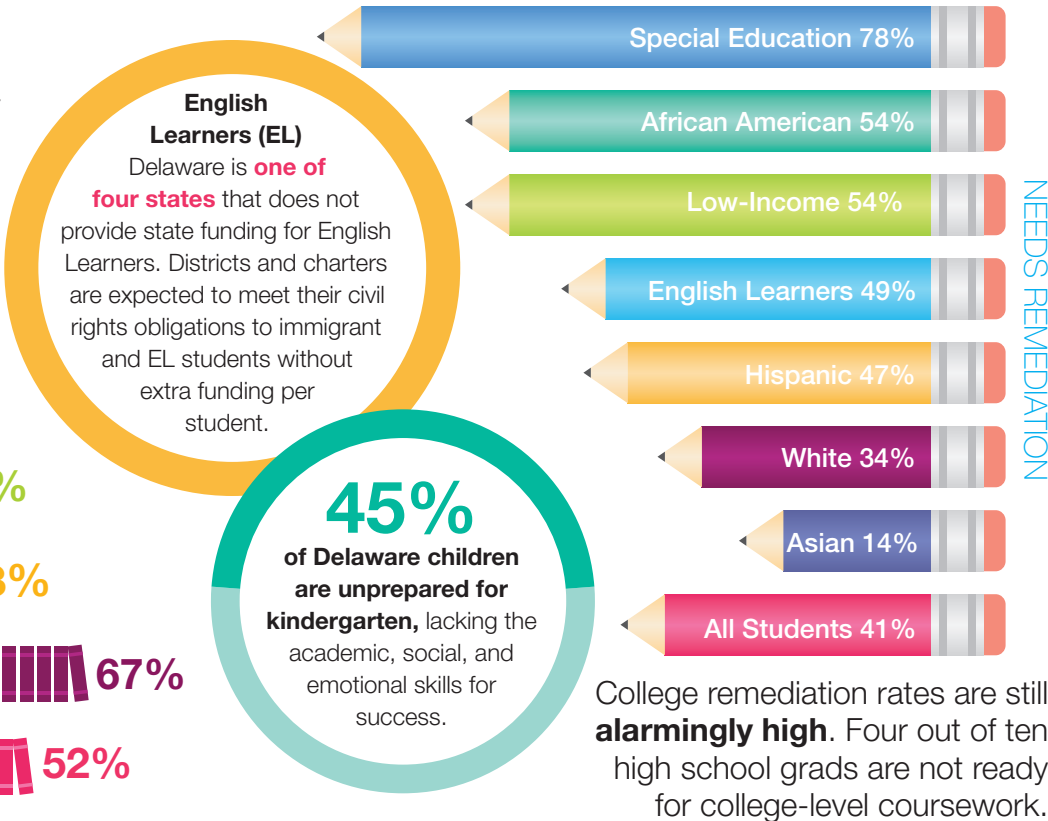
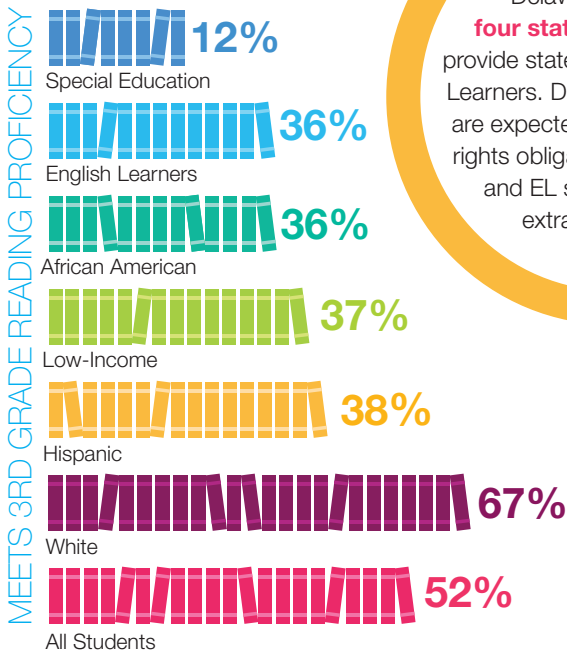
Areas of Progress

Delaware has made great progress just three years into *Student Success 2025*, but in other areas, there is more work ahead.



Areas Needing Improvement

3rd grade reading proficiencies—a predictor of high school graduation—needs improvement.



Delaware Advances

Delaware Pathways Continues its Momentum



"Economic growth depends on having a strong middle class open to all Americans. @BloombergDotOrg will help bolster Gov. @JohnCarneyDE's Delaware Pathways program, working to prepare young people for high-demand jobs." –Michael Bloomberg, via Twitter, April 27

What's Next?

- A \$3.25 million grant from Bloomberg Philanthropies (on the heels of a \$2 million grant from JP Morgan Chase and Co.) will help bolster Delaware Pathways, including expanding the Office of Work-Based Learning at Delaware Technical Community College, and engaging 20,000 youth in career pathways in high-demand fields while supporting over 7,000 secondary and postsecondary students in work-based learning experiences by 2020.

Funding Hits the Headlines



"There's a rich history of advocacy in Delaware for educational equity. And yet, we know there's so much more to do. Resource allocation isn't just an esoteric policy question, it's about what kids experience in school every day. How we ensure equitable access to resources is what opens up the opportunities for kids to make of their lives what they will."

For some kids, school is the only place where they get regular meals, where they have strong, positive relationships with results. That's what's at stake. When we talk about resource equity, we have to realize that too often we aren't providing all kids with the things they need to thrive. Too often we give those who need the most—the least." –John King, Education Trust and former U.S. Secretary of Education

What's Next?

- While a lawsuit levied against the state by the ACLU and other civil rights groups awaits next steps, we can look forward to new school report cards as mandated by the federal Every Student Succeeds Act (ESSA) and Delaware Senate Bill 172. These new reports will capture school-level finance, new English learner data, and more.
- ESSA will require states, districts, and schools to identify resource inequities as part of the school improvement process, and will create more opportunities for communities to engage.

Social and Emotional Learning (SEL) Goes Mainstream



"I am so impressed with the thoughtful approach Delaware has taken with SEL, with multiple constituents coming together around this. I see Delaware as so far ahead of other states in terms of all of the resources you've created, the thoughtful framing and thinking that you've already done. I see you as ready for this work and really excited to see the plan that you develop." – Linda Dusenbury, Collaborative for Academic, Social, and Emotional Learning (CASEL)

What's Next?

- As teachers, parents, students, and policymakers work to build more holistic approaches to student development, Delaware (led by the Rodel Teacher Council and district leaders) will join CASEL's Collaborative States Initiative, which supports states in adopting SEL guidelines and standards.