

# School Funding Impacts

Vision Coalition Webinar

June 12, 2023

---

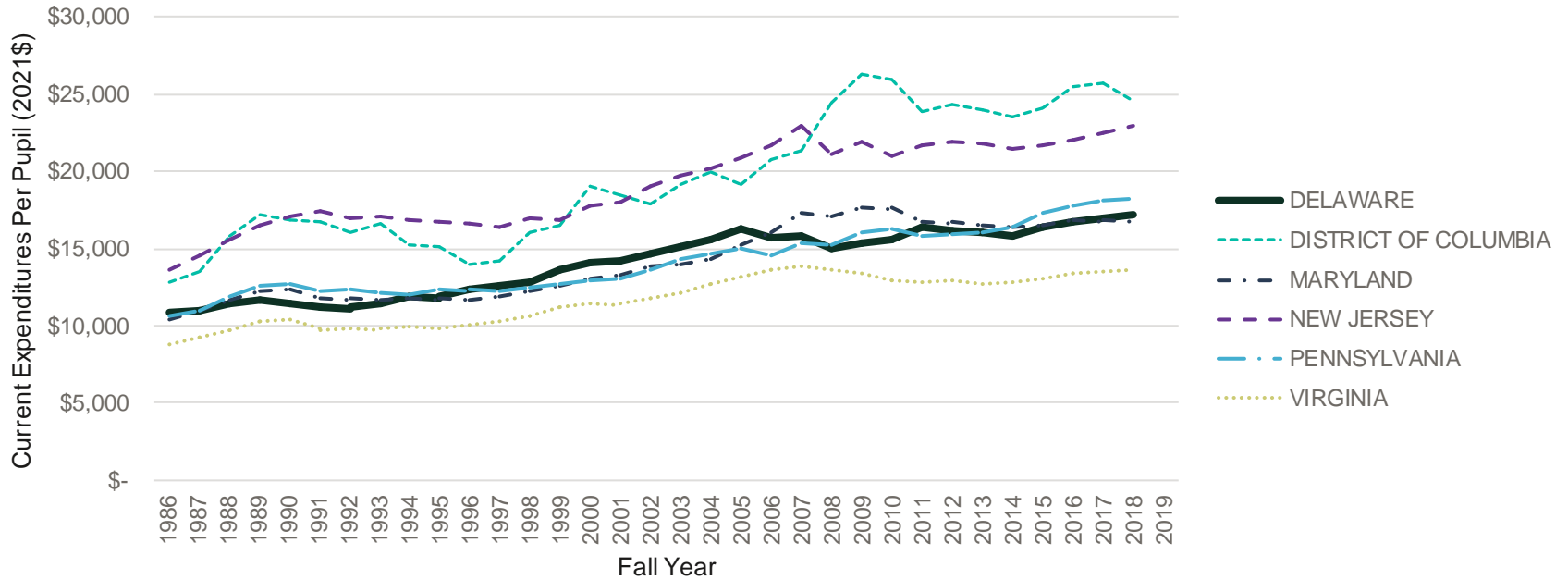
Julien Lafortune



**PPIC**

PUBLIC POLICY  
INSTITUTE OF CALIFORNIA

# Federal Data: Current Spending Per Student



Notes: Spending adjusted for inflation using the CPI-U. Source: National Center for Education Statistics

# Spending Time Series: Highest vs Lowest Income District

## Lafortune, Rothstein, and Schanzenbach (2018)

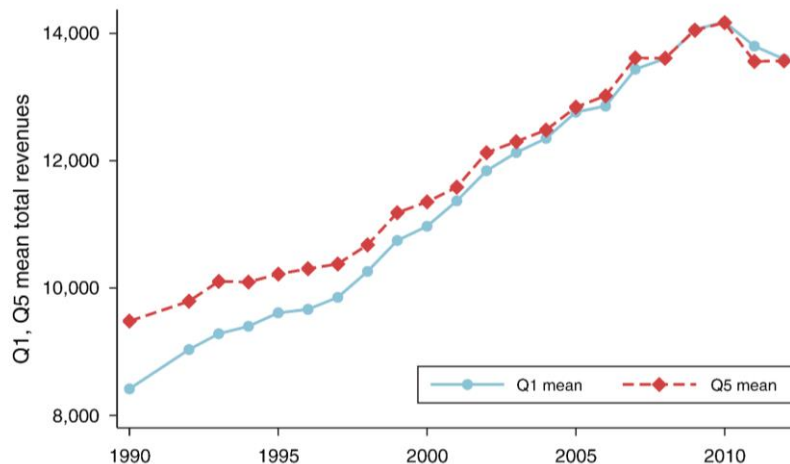


FIGURE 1. MEAN REVENUES PER PUPIL FOR HIGHEST AND LOWEST INCOME SCHOOL DISTRICTS, 1990–2012

*Notes:* Highest (lowest) income districts are those in the top (bottom) 20 percent of their states' district-level distributions of mean household income in 1990, and are labeled as "Q5" and "Q1", respectively. See online Appendix for details of quintile classifications. Revenues are expressed in real 2013 dollars. Districts are averaged within states, weighting by log district enrollment; states are then averaged without weights. Hawaii and the District of Columbia are excluded.

# Spending Time Series: Gap between Highest vs Lowest Income

Lafortune, Rothstein, and Schanzenbach (2018)

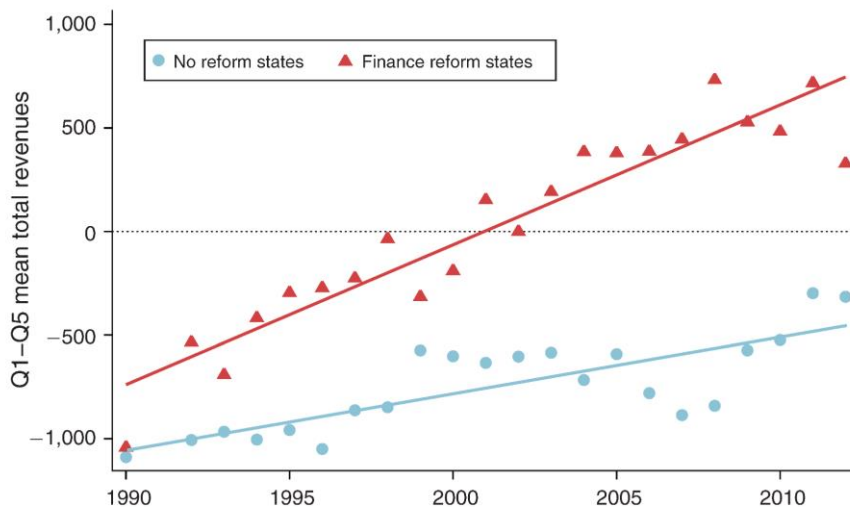
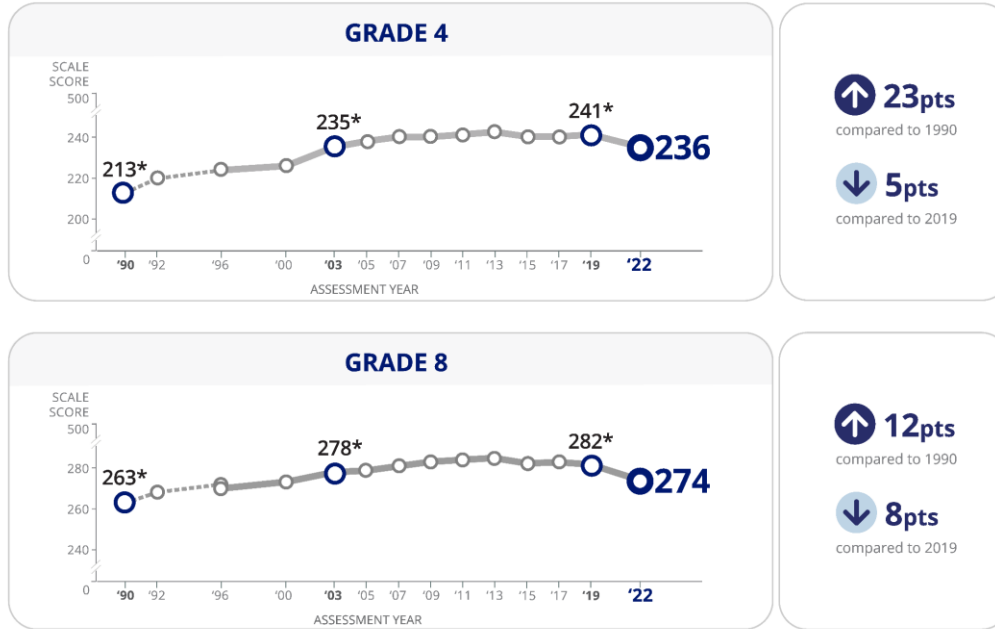


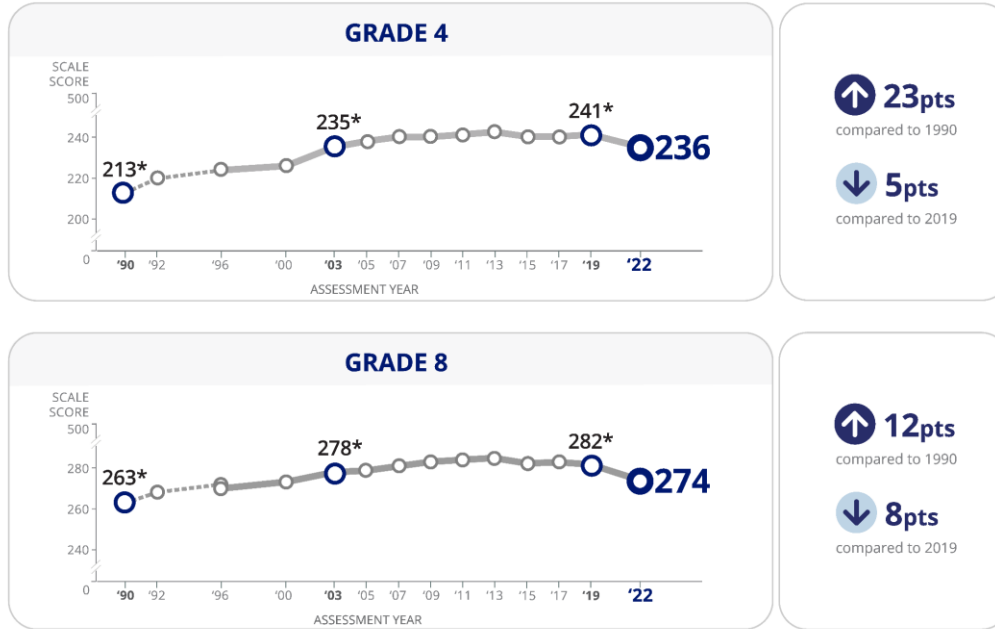
FIGURE 2. GAP IN REVENUES PER PUPIL BETWEEN LOWEST AND HIGHEST INCOME DISTRICTS, BY STATE FINANCE REFORM STATUS, 1990–2012

Notes: See notes to Figure 1. Finance reform states are those with school finance reforms between 1990 and 2011, as listed in online Appendix Table A1. Lines show unweighted best linear fit to time series.

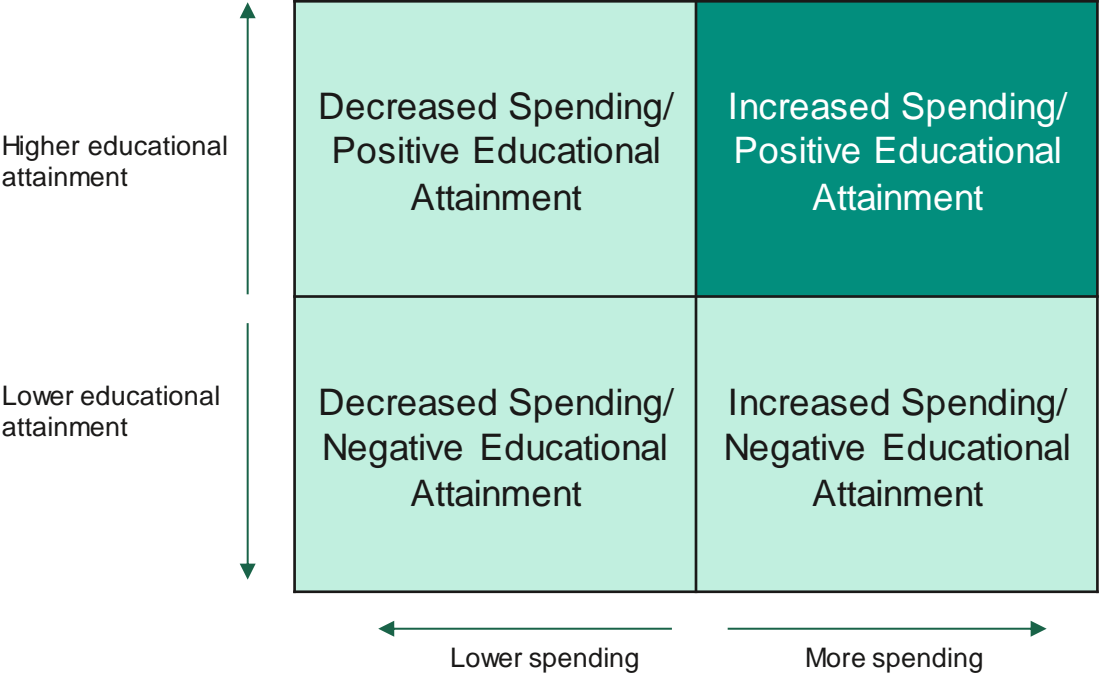
# NAEP Math (Grade 4 and Grade 8)



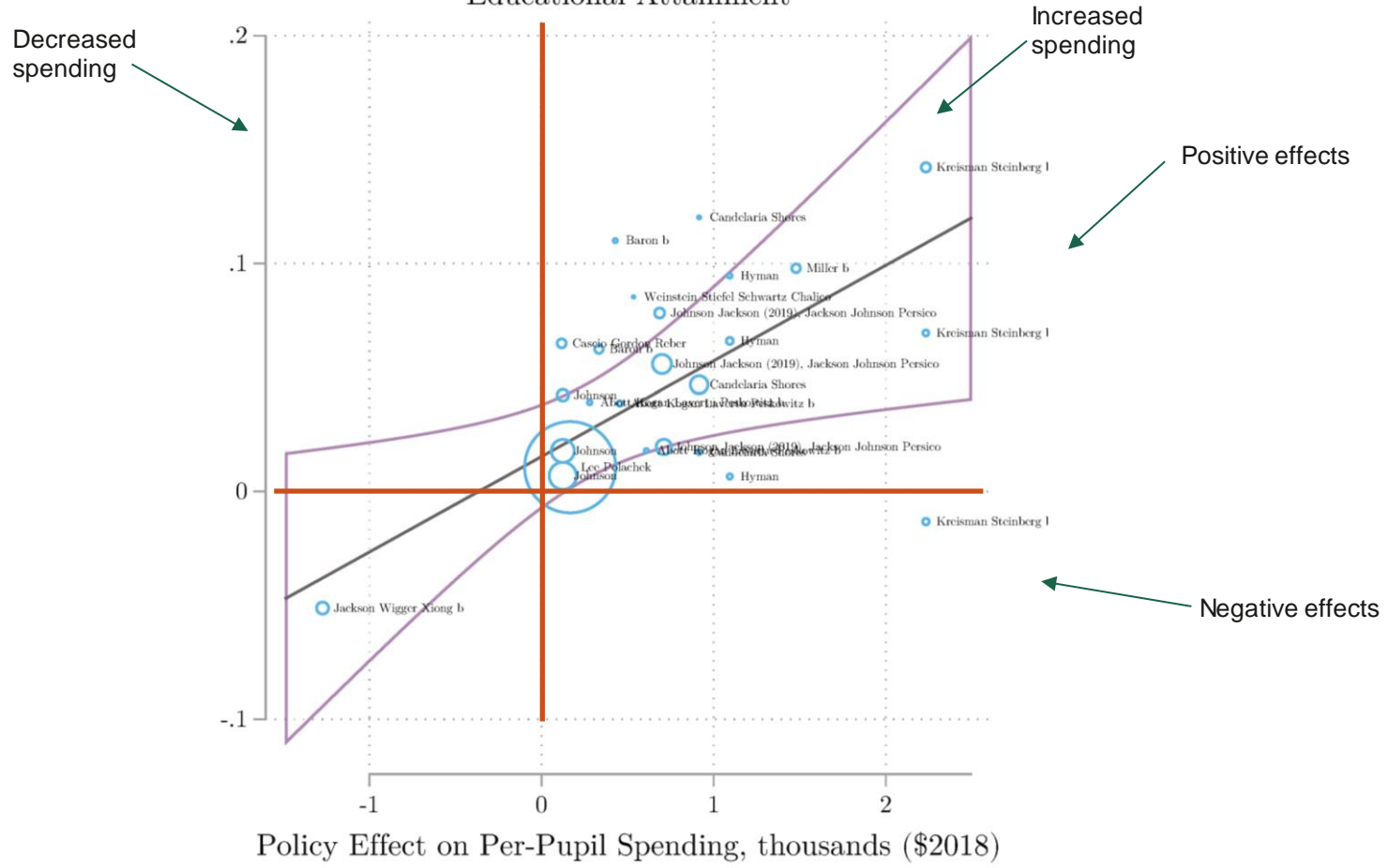
# NAEP Reading (Grade 4 and Grade 8)



# Policy Impacts Related to Increased Spending (from Jackson and Mackevicius, 2023)

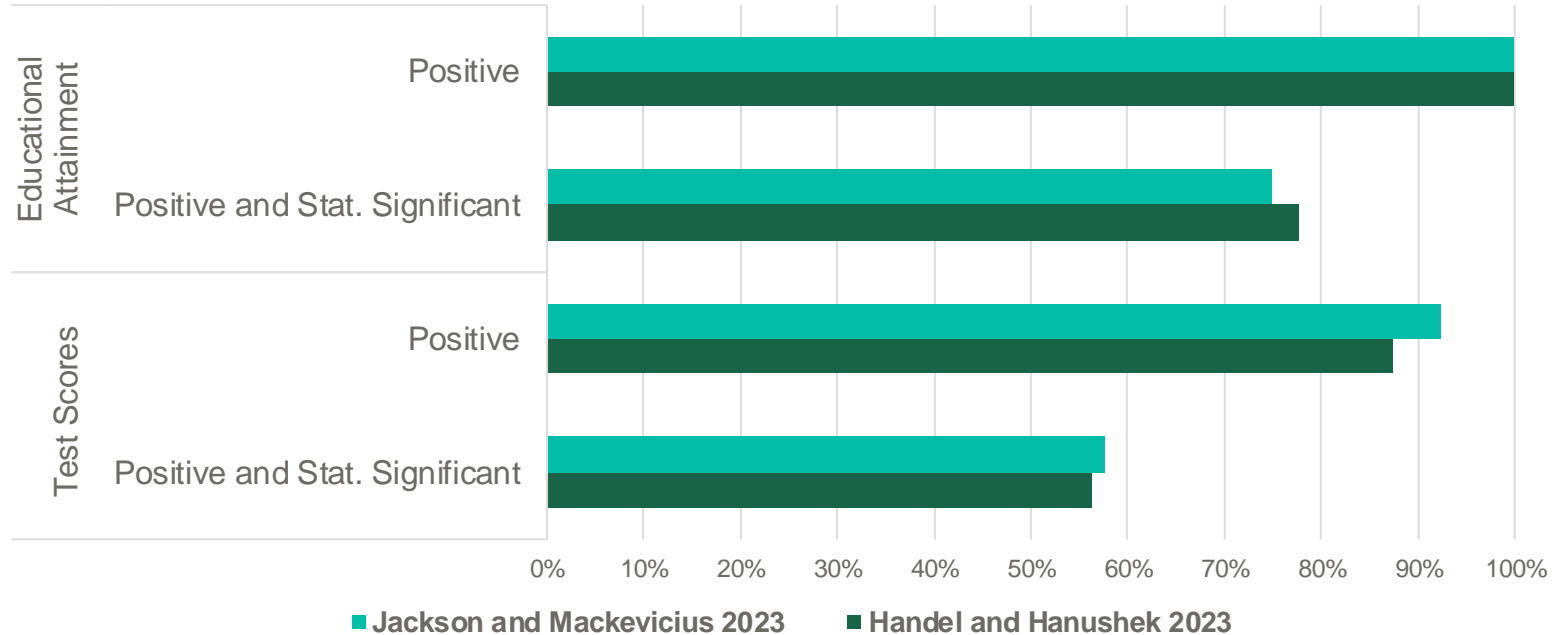


# Educational Attainment





# Estimates of School Spending Impacts from the Literature



# Additional Resources

- Policy-oriented literature review:
  - <https://www.ppic.org/publication/understanding-the-effects-of-school-funding/>
- Academic literature reviews:
  - [https://works.bepress.com/c\\_kirabo\\_jackson/44/](https://works.bepress.com/c_kirabo_jackson/44/)
  - <https://www.edworkingpapers.com/index.php/ai23-705>

# Notes on the use of these slides

These slides were created to accompany a presentation. They do not include full documentation of sources, data samples, methods, and interpretations. To avoid misinterpretations, please contact:

Julien Lafortune ([lafortune@ppic.org](mailto:lafortune@ppic.org); 415-291-4473)

Thank you for your interest in this work.